

Community Update

December 2016

For over 50 years, the Keperra Quarry has formed a significant part of the local landscape. An application has been lodged to transform the site into a new community for Keperra. Once quarrying is complete, we are proposing to turn the site into a master-planned community for people to live, work and play, with an abundance of open space!

The Proposal.

A proposal to rejuvenate the active quarry into a master-planned community comprising residential, retail and recreational space, has been lodged with Council. The proposed community would provide a mix of low and medium density housing, integrated with the existing Greater Western Super Centre.

Approximately 65% of the site is proposed to remain as open space, as bushland, landscaped parks, active recreation and conservation reserves.

Artists impression

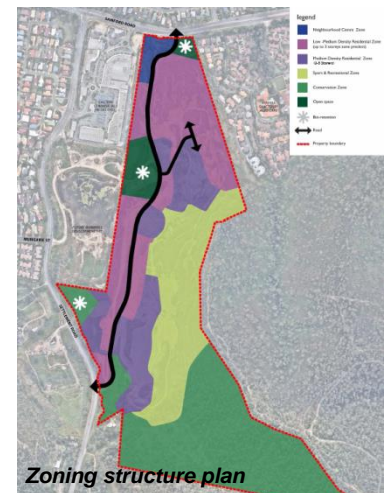


Community Consultation.

The 2016 application requests approval of residential, commercial and open space zones. Future detailed applications will be lodged to determine exact layouts, which will be compliant with Council's codes.

Prior to responding to Council's Request for Information, Brookfield is seeking feedback from the community on the redevelopment. We are interested in your views, and will be available in-person to discuss the proposal. Please visit us on the dates listed below.

After Brookfield's community consultation, Council will seek formal feedback in early 2017 via a six-week public notification process.



Speak with us in person.

- Thursday 8th Dec, 5pm – 8pm
Great Western Super Centre
- Saturday 10th Dec, 9am – 12pm
On-site (enter off Settlement Road)
- Saturday 17th Dec, 9am – 12pm
On-site (enter off Settlement Road)

View the proposal.

Web.

www.transformingkeperraquarry.com.au

Email.

transformingkeperraquarry@au.brookfield.com

Phone.

07 3907 4111 (9am – 5pm weekdays)